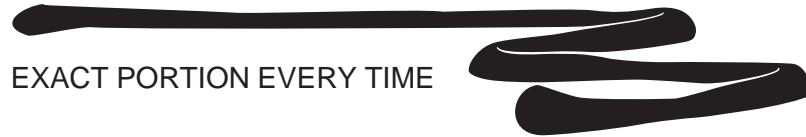


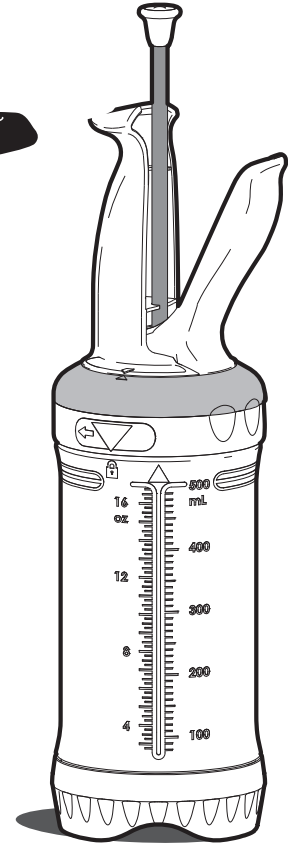







PORTION PAL™



EXACT PORTION EVERY TIME

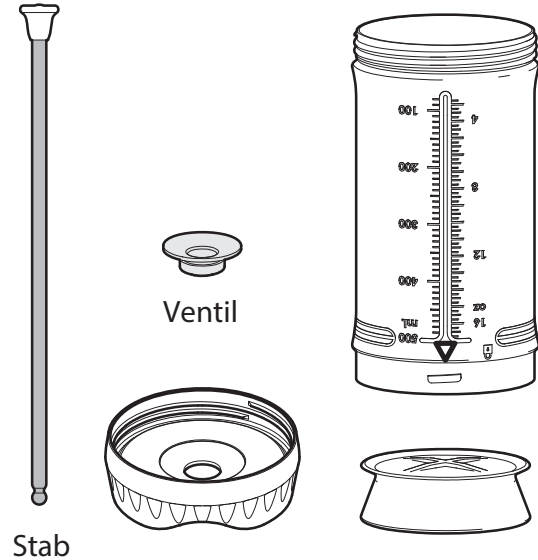
Benutzerhandbuch



	Vorbereiten und Befüllen	4
	Ausgeben	10
	Zerlegen zum Reinigen	14
	Portionierring wechseln	16
	Handgriff auseinanderbauen	19

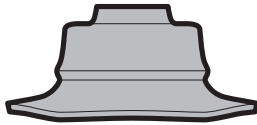
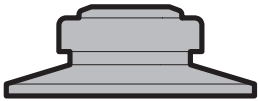


Waschen Sie vor der ersten Benutzung alle Teile gründlich mit Wasser und Seife ab.

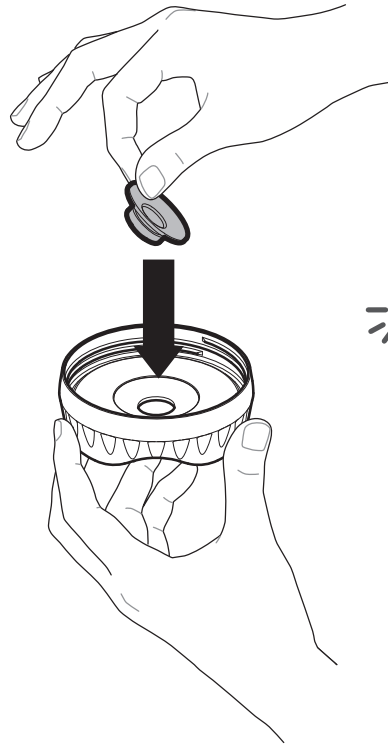


1

Ventil prüfen

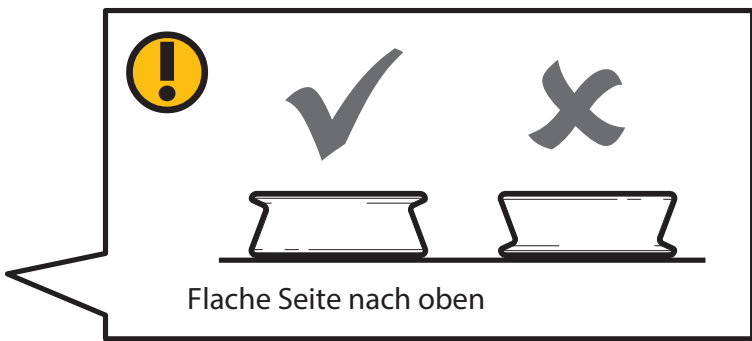
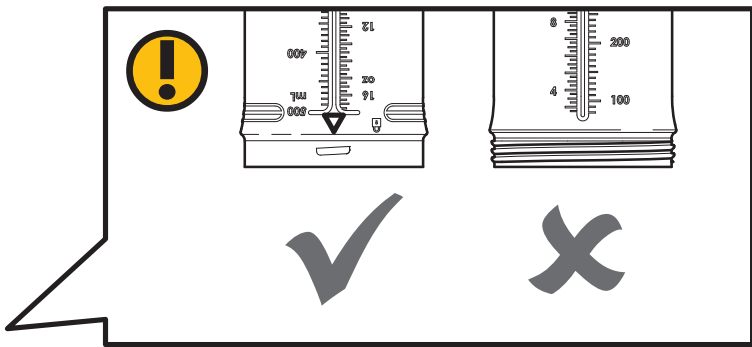
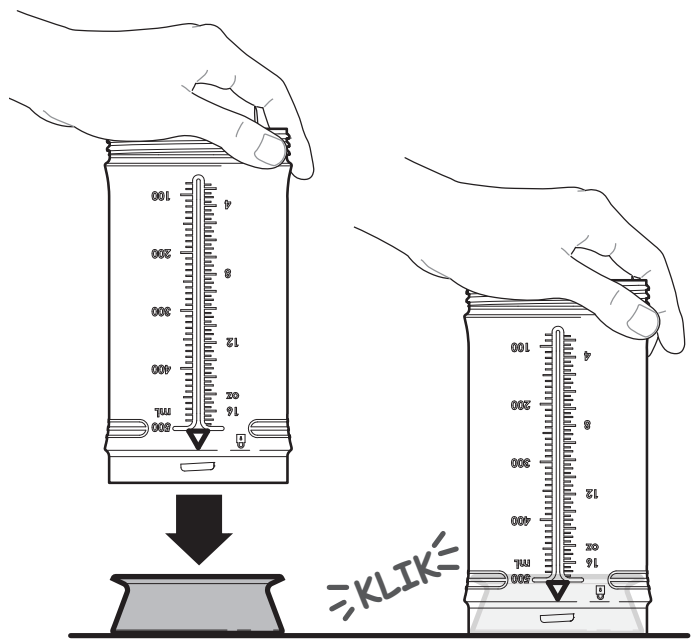


2

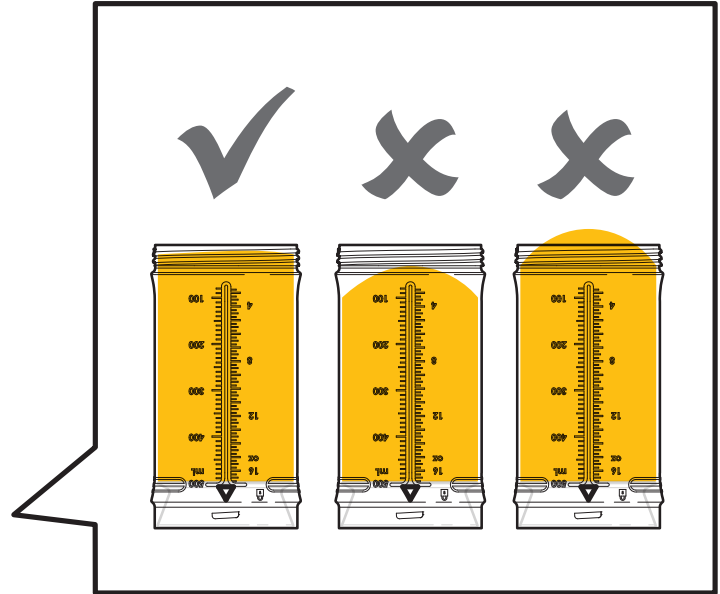
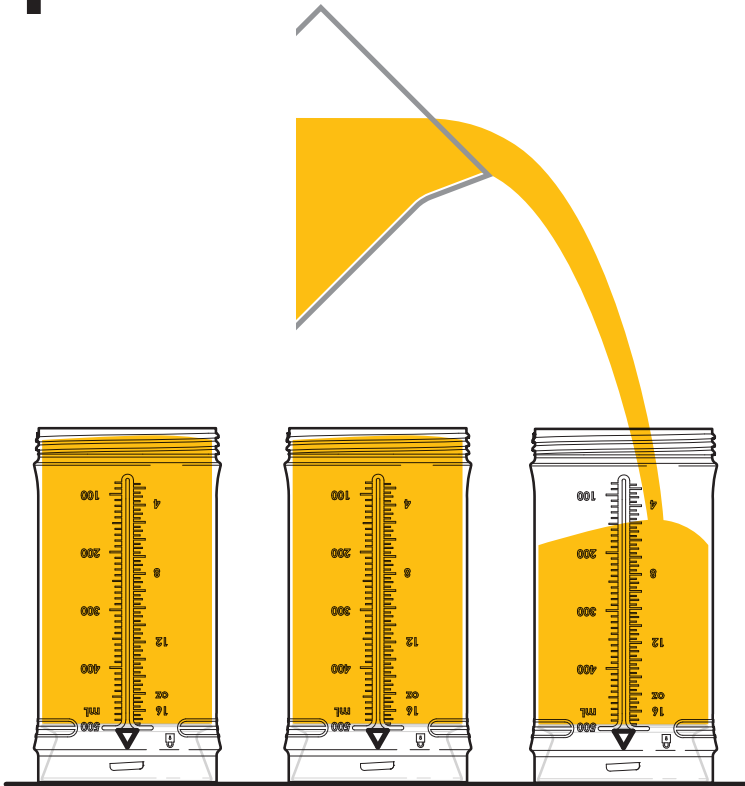


Vorbereiten und Befüllen

3



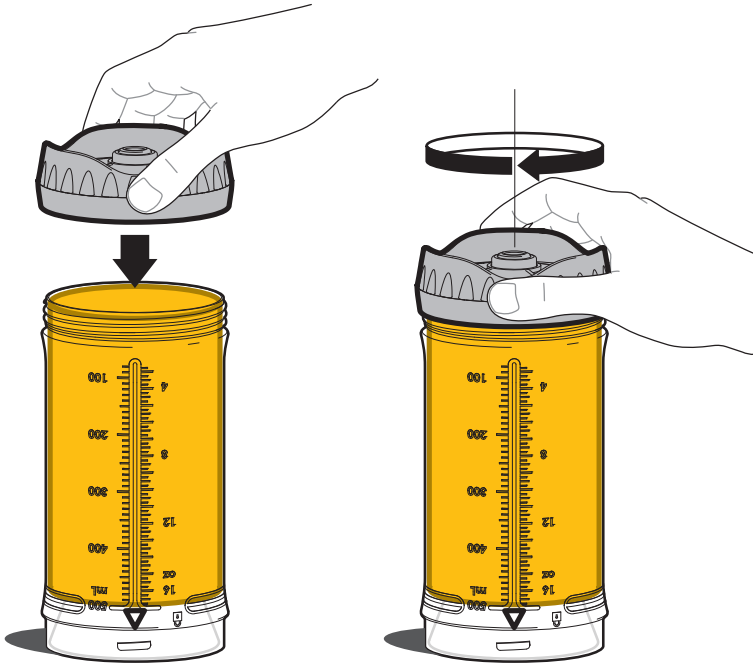
4



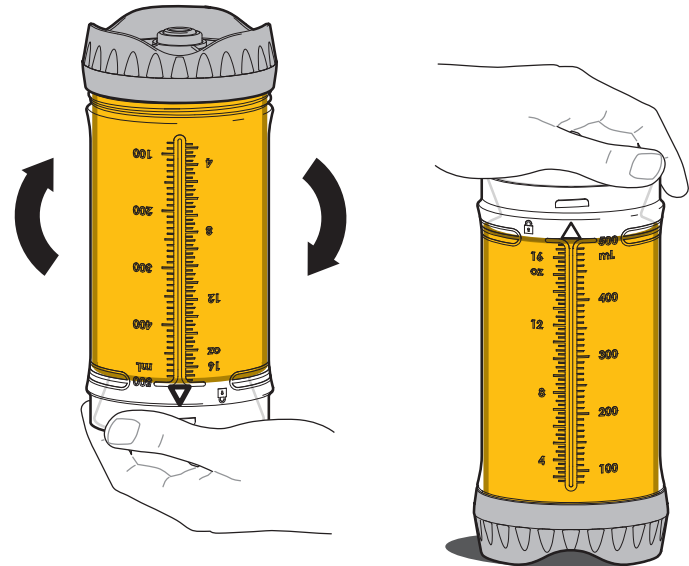
 Alle Flaschen Wiederbefüllen

Vorbereiten und Befüllen

5



6

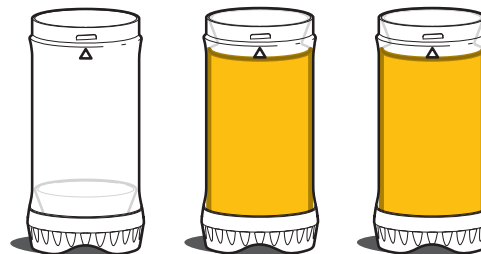
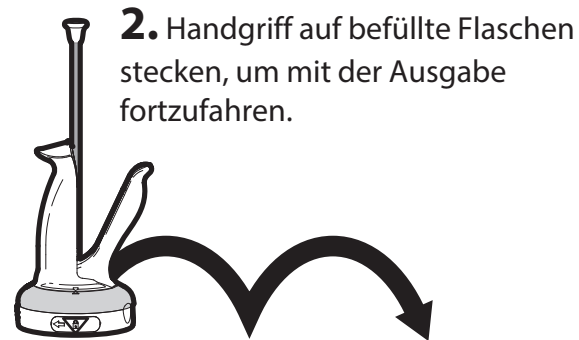
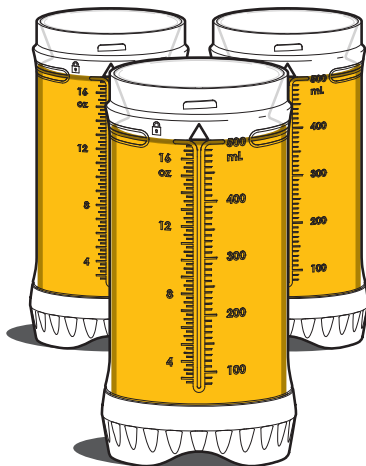


i Vorsichtig mit Hand unter der Flasche umdrehen.



PORTION PAL ARBEITSABLAUF

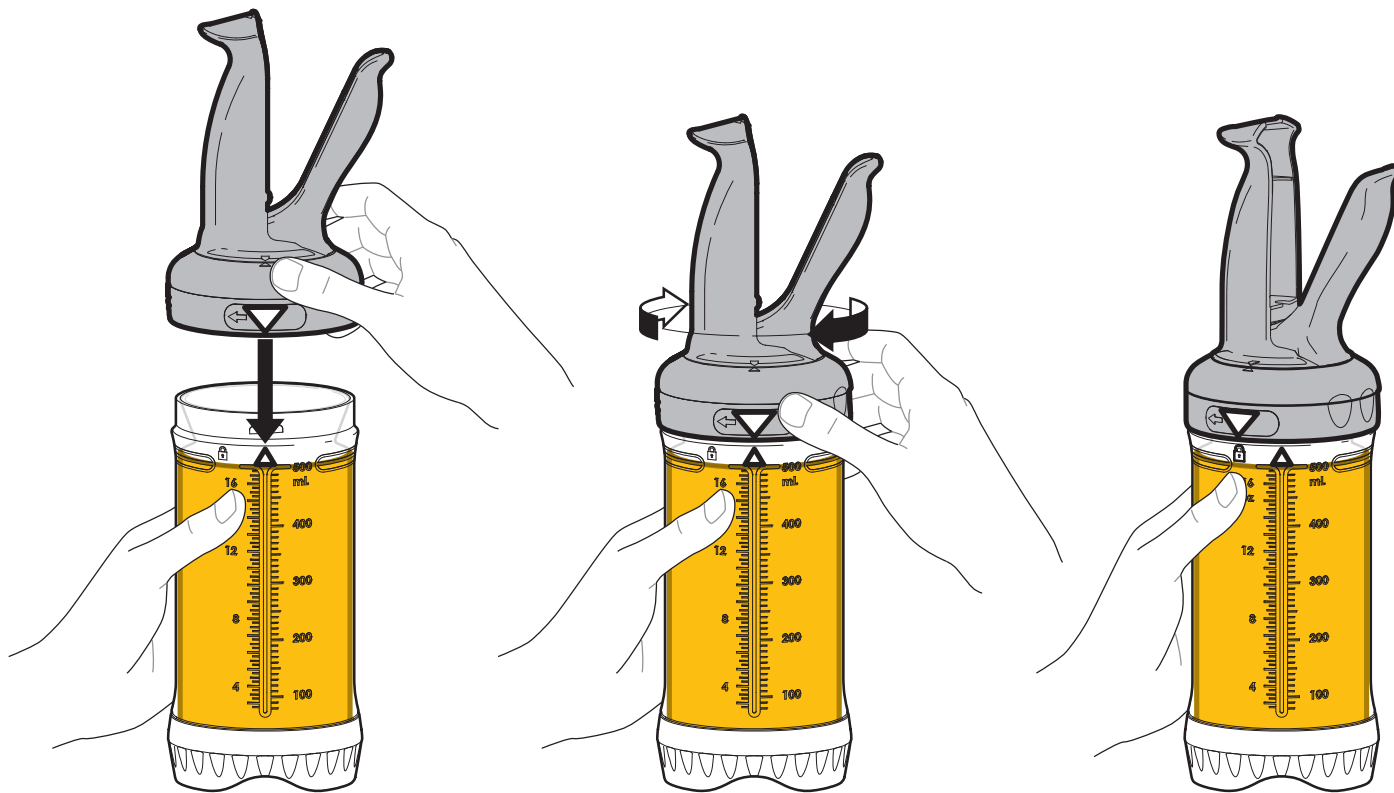
1. Zuerst alle Flaschen Wiederbefüllen



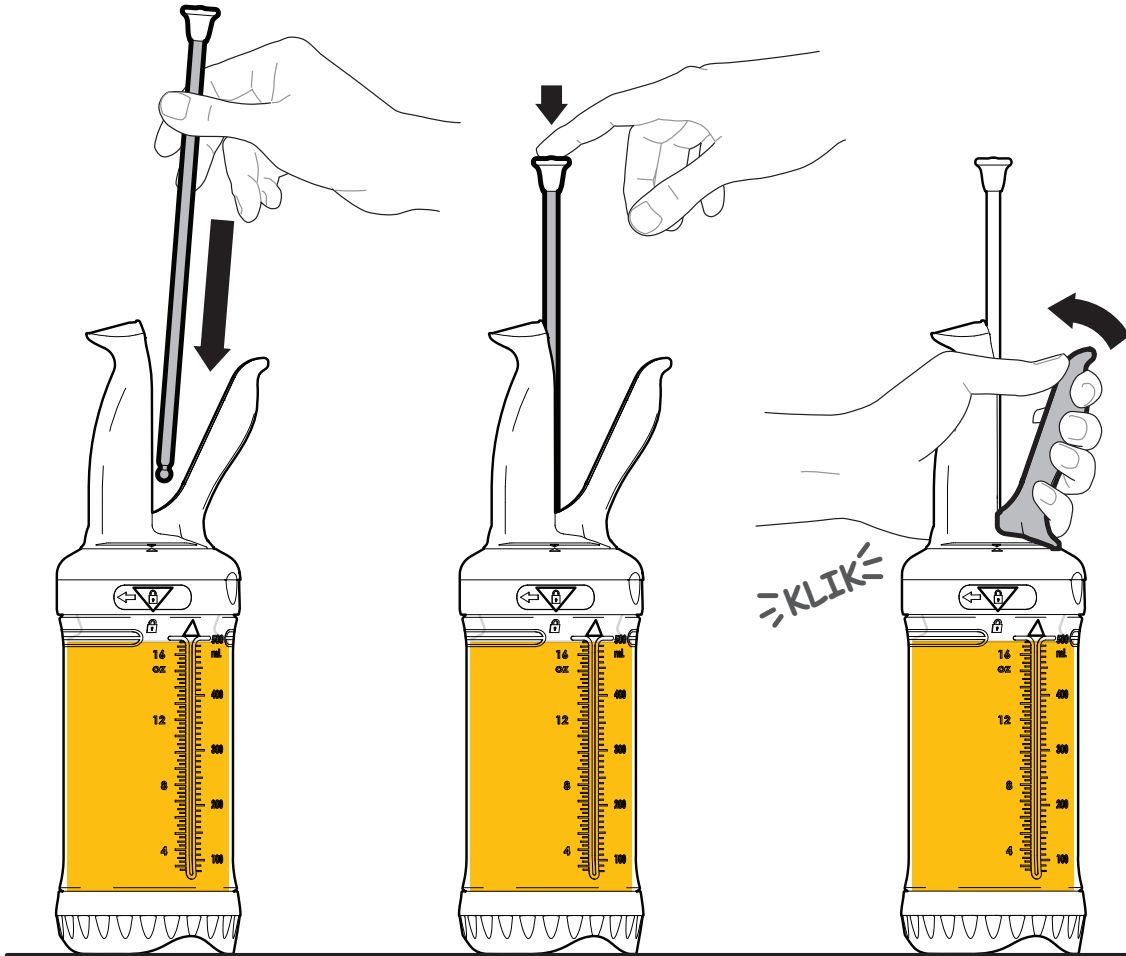
Leere
Flasche

└ Wiederbefüllte — — — — —>

1

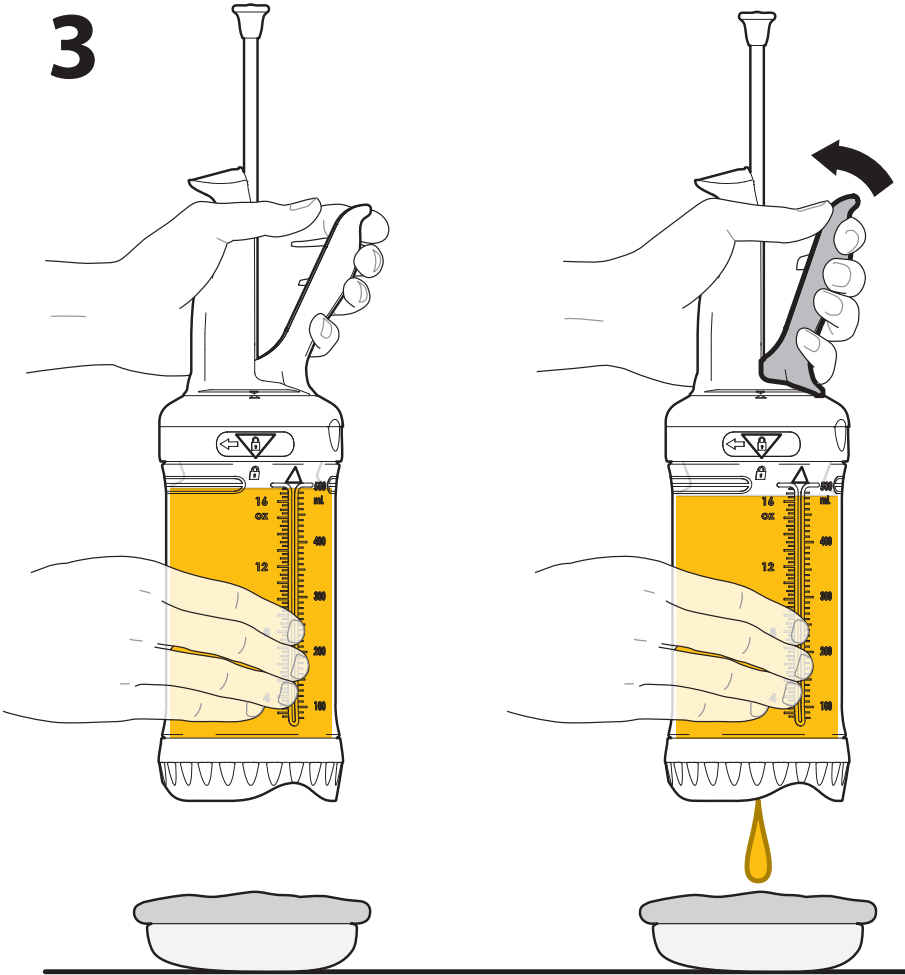


2



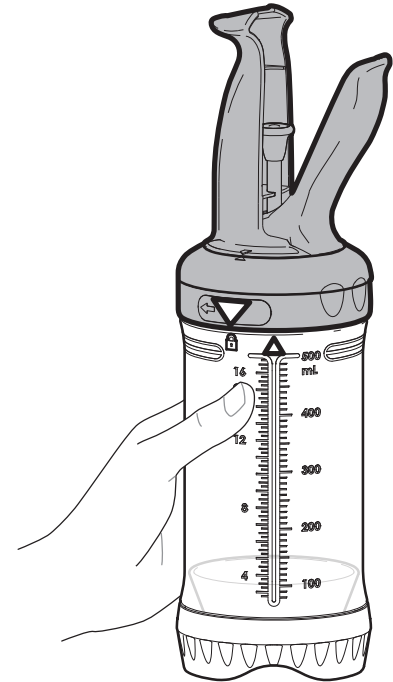
Ausgeben

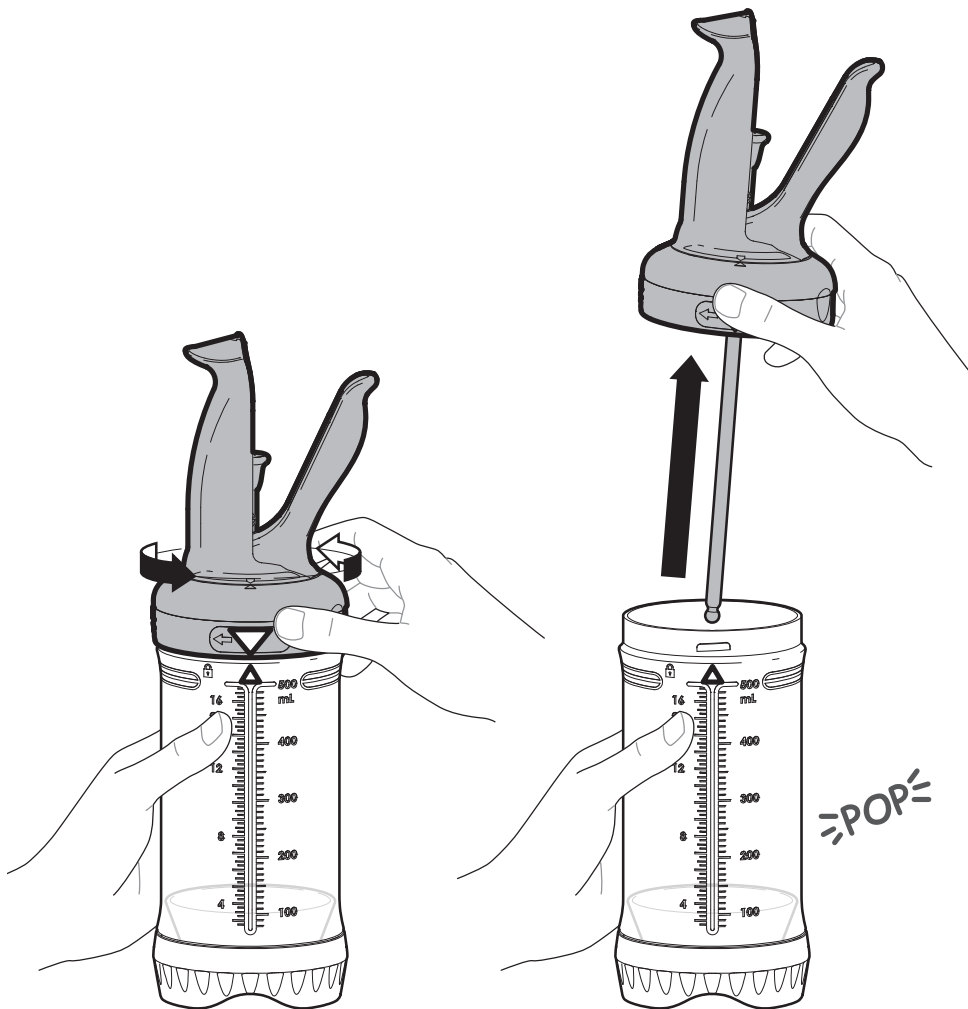
3



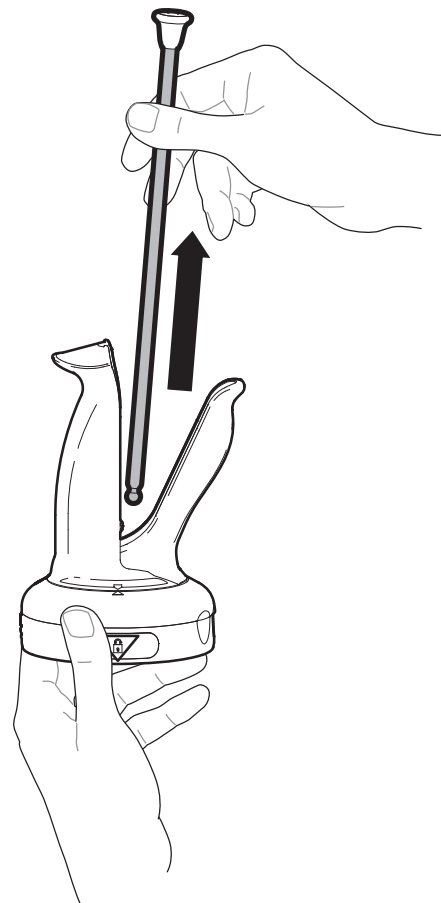
4

Leere Flasche



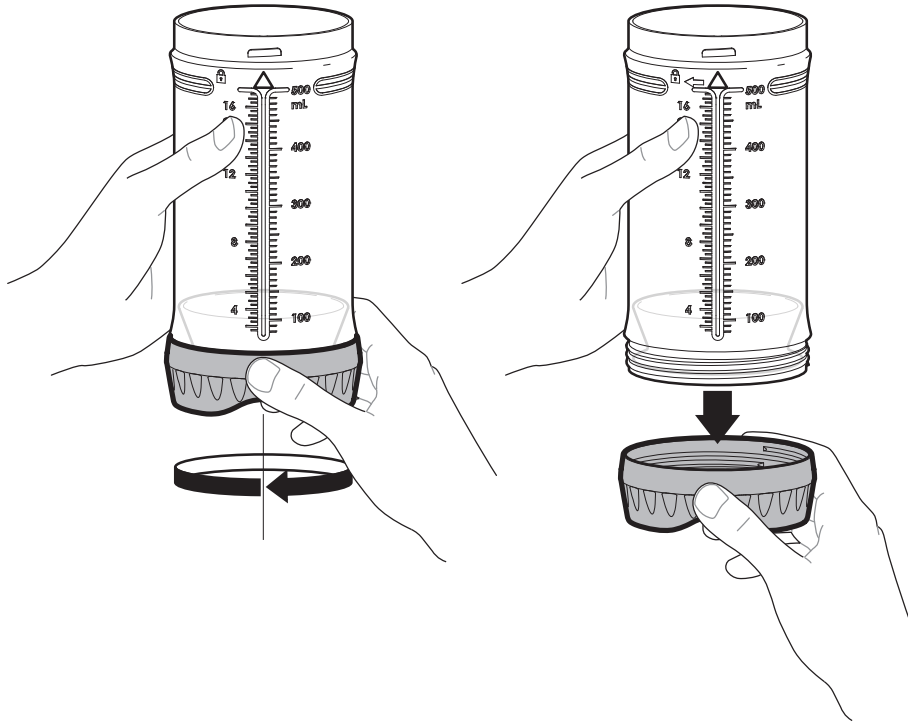


5

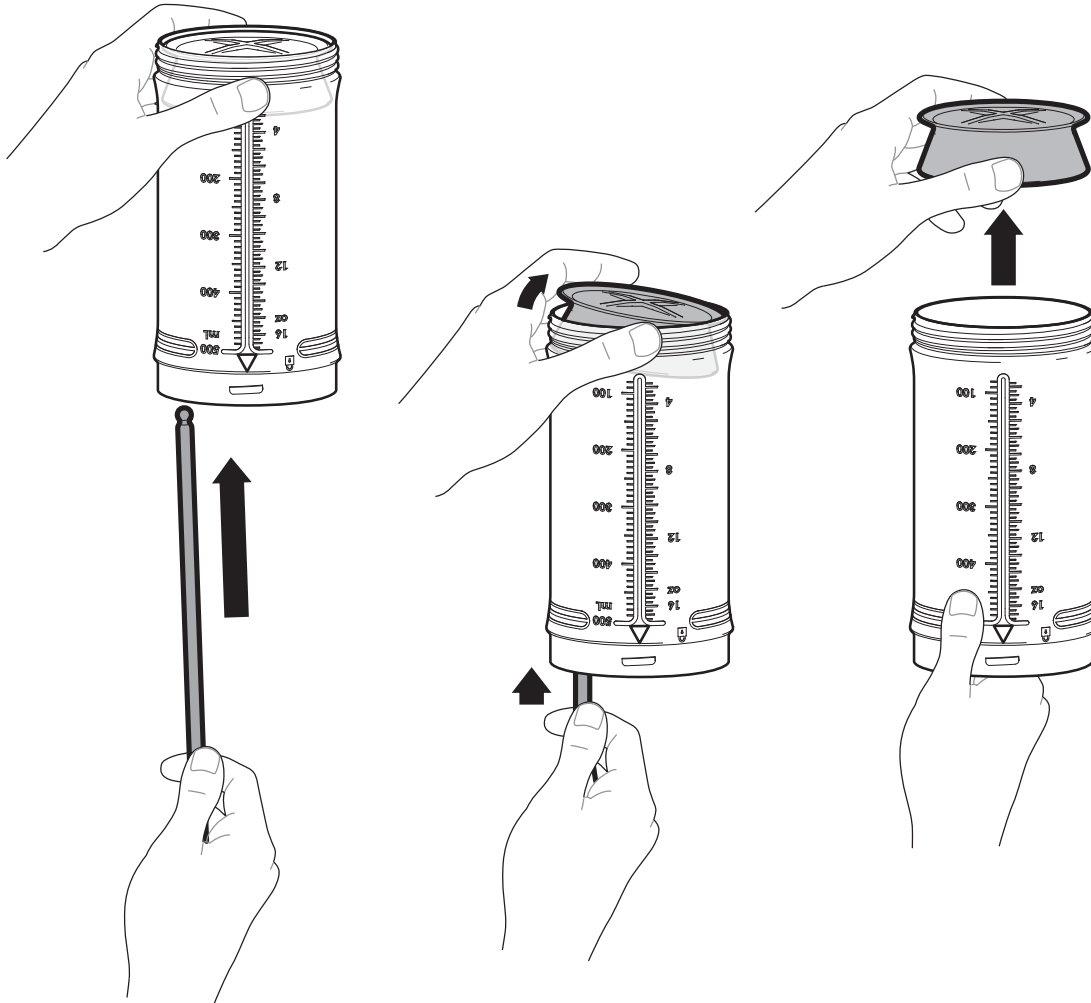


Zerlegen zum Reinigen

1

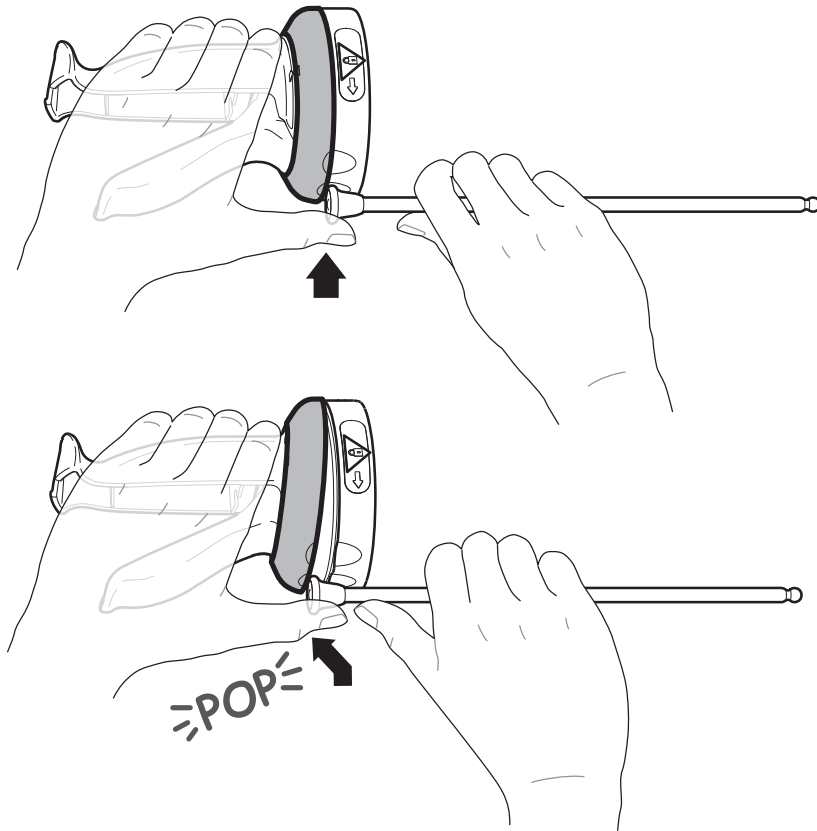


2

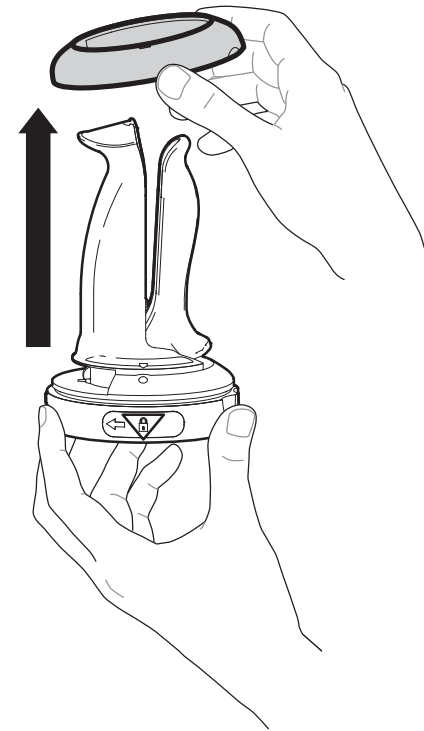


Portioniererring wechseln

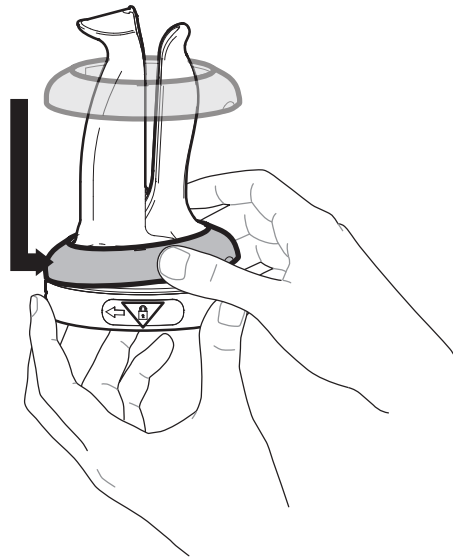
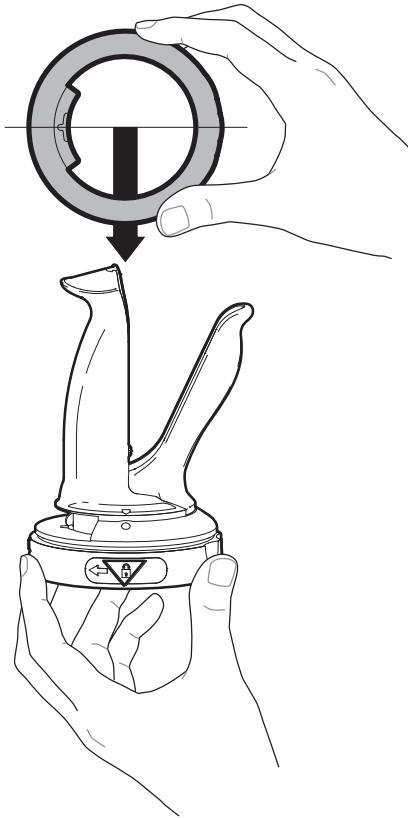
1



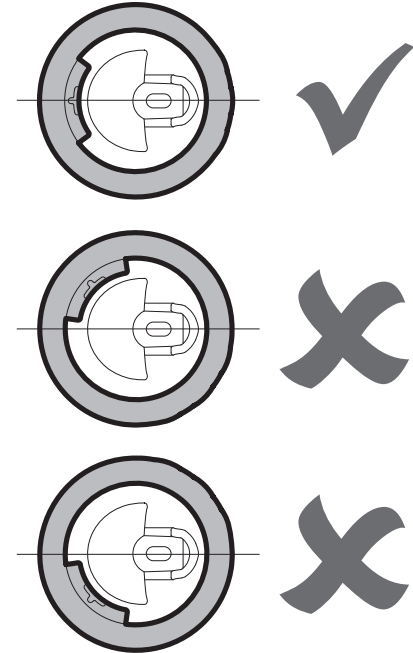
2



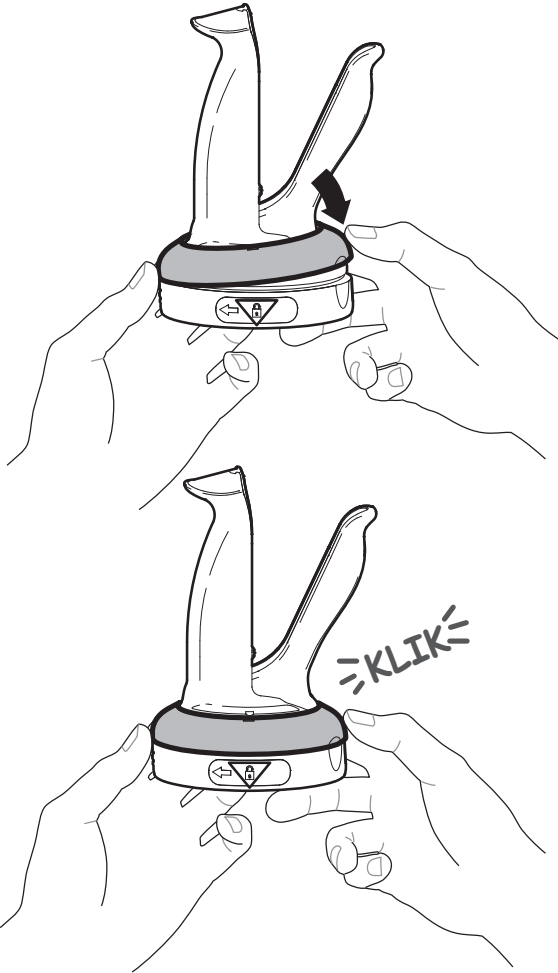
3



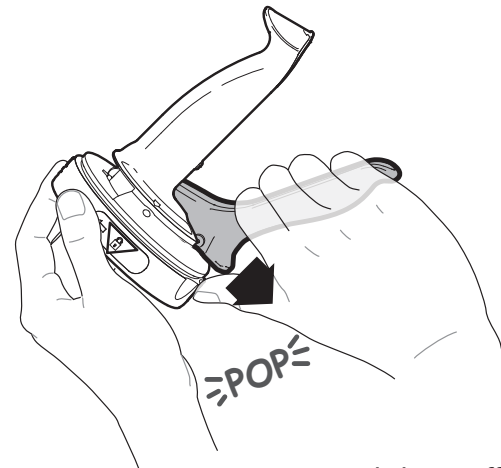
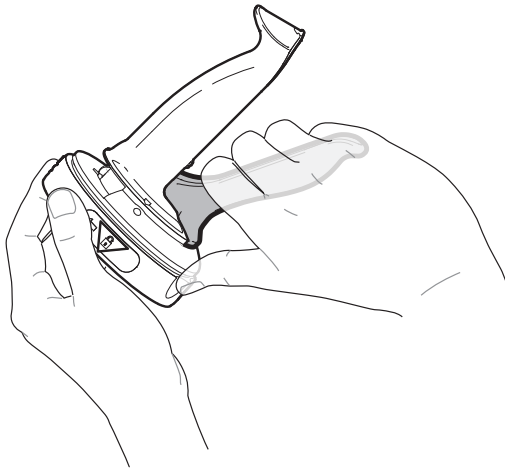
Ringausrichtung Draufsicht



4

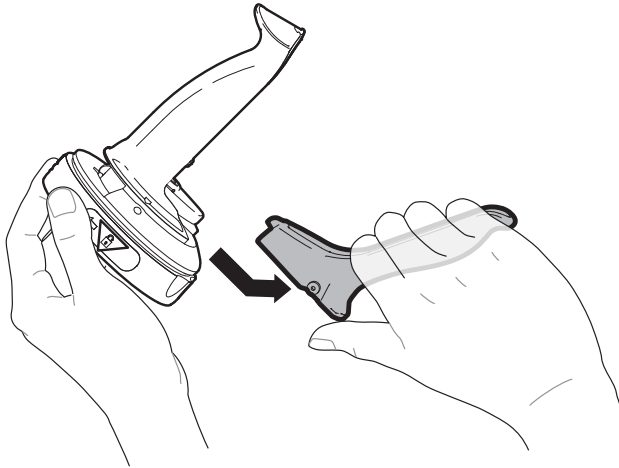


1



Bewegliches Griffteil in
Pfeilrichtung abziehen.

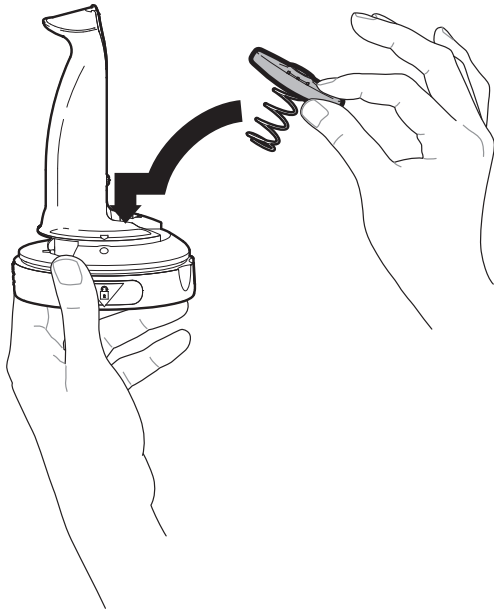
2



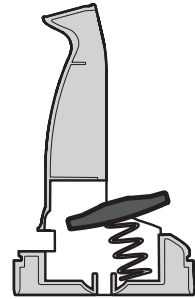
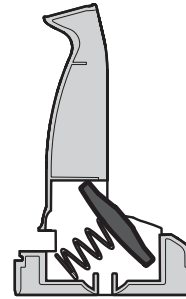
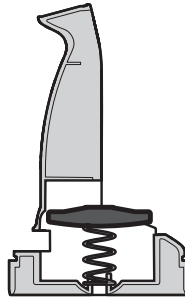
3



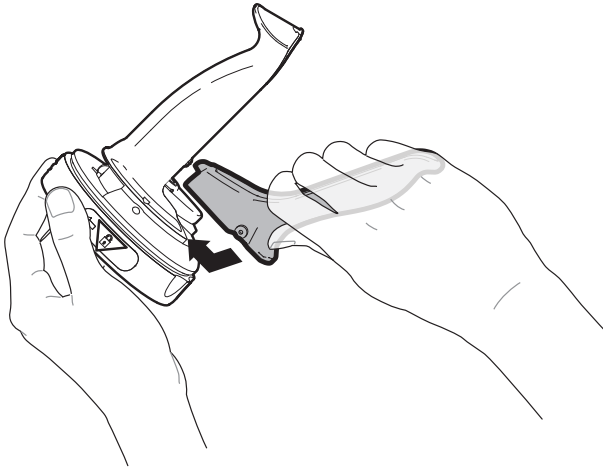
1



Position der Feder



2



3





F&B Tec GmbH - Food & Beverage Equipment

F&B Tec GmbH
Gutsweg 2
D-09221 Neukirchen

Tel.: +49 (0) 371 - 262 00 40
Fax: +49 (0) 371 - 262 00 41

E-Mail: office@f-b-tec.de
Web: www.f-b-tec.de